


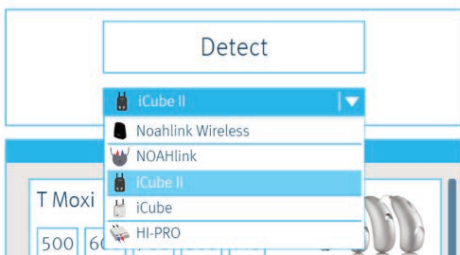
Made easy – First fits

A guide for successful, efficient first fits with less follow-up

 Note: Upon opening software, ignore Experience with Hearing Instruments.

Step 1: Detecting hearing instruments

- Programming interface:
 - For Moxi™ All – NOAHlink Wireless.
 - For all other hearing instrument models – iCube II.



- Select “use fitting from the hearing instruments” to ensure factory pre-programming/requested settings are maintained.

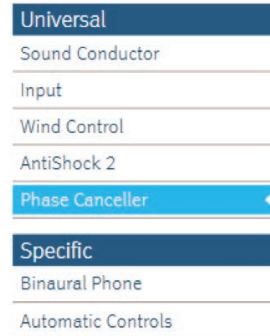


Step 2: Add remote control function for accessories (optional)

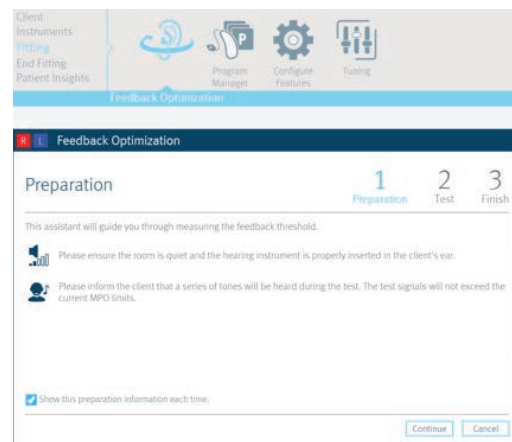
- All accessories come paired and fully charged.
- For Moxi All – activation of accessories is not required.
- For all other hearing instrument models – activation of accessories is only required if adjusting user settings. Follow prompts to identify accessory.

Step 3: Feedback control

- Only necessary if feedback is present.
- If feedback is present, first increase the phase canceller strength. [Fitting > Configure Features > Phase Canceller.](#)

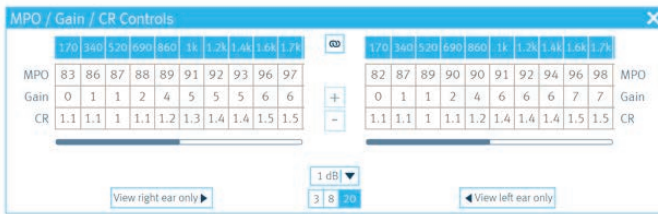


- If feedback persists, run feedback test. [Fitting > Feedback Optimization.](#)

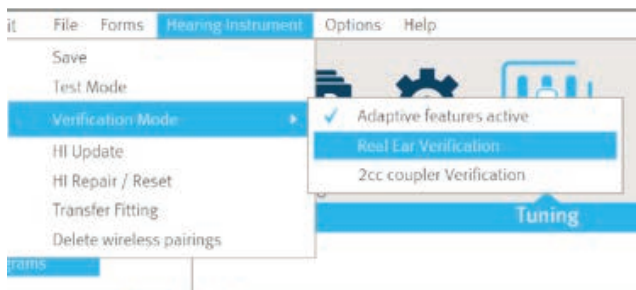


Step 4: Verification

- [Fitting > Tuning > Soft/Mod/Loud Controls](#) for frequency response adjustments.

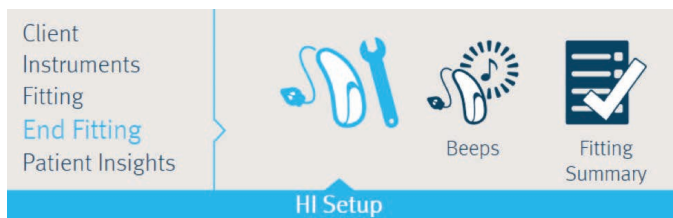


- To disable adaptive features while performing verification: [Hearing Instrument](#) (tab located at the top) > [Verification Mode > Real Ear Verification](#).



Step 5: Push button and volume control configuration

- [End Fitting > Hearing Instrument Set Up](#) to verify push button and volume control are set as desired.
- [End Fitting > Beeps](#) to demonstrate beep indicators.

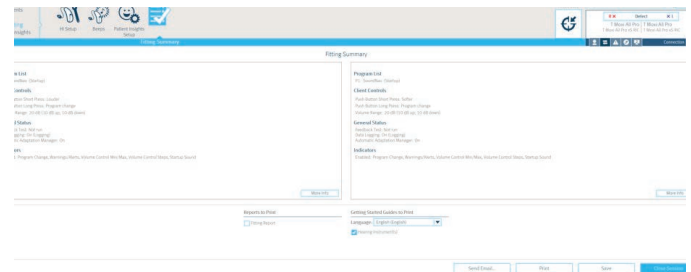


- Print “Getting Started Guide” in [End Fitting > Fitting Summary](#)

Step 6: Save and close session

- [End Fitting > Fitting Summary](#)

Note: If accessory user controls were changed, include accessory when saving.



- When saving is successful, close session and open and close battery doors.