

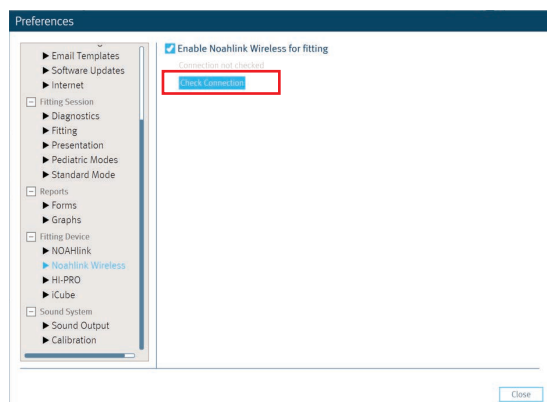
Moxi All programming instructions

Required software and programming interface

- Unitron TrueFit™ fitting software 3.6.0
- Noahlink Wireless

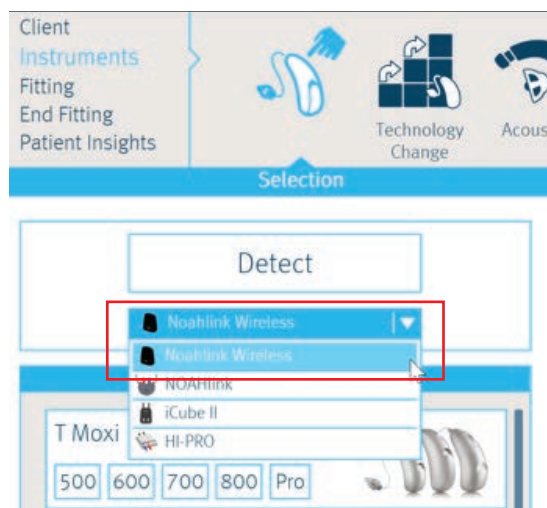
Step 1: Add Noahlink Wireless to Unitron TrueFit

- Go to Options > Preferences > Fitting Devices > Noahlink Wireless.
- “Click” check connection.



Step 2: Choose programmer - Noahlink Wireless

Below the “Detect” button, select the drop down arrow and change to Noahlink Wireless.

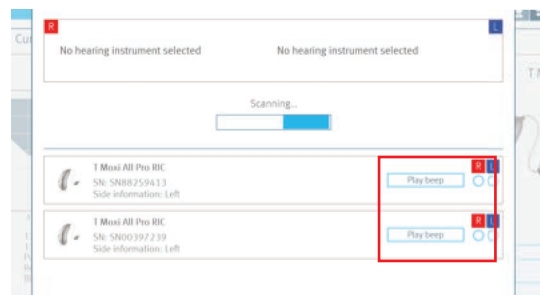


Step 3: Detecting hearing instruments

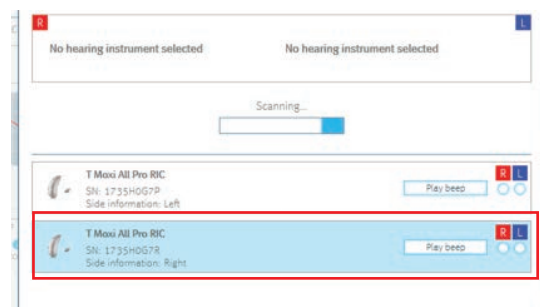
- Put the hearing instruments in pairing mode by opening and closing the battery doors. They remain in pairing mode for 3 minutes.

Step 4: Selecting hearing instruments

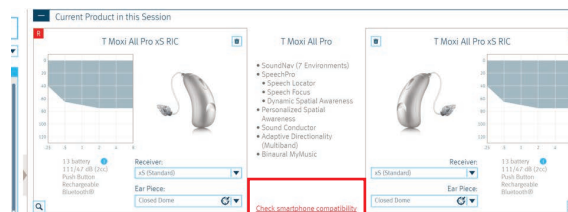
- Click on “Play Beep”. Beep will sound; select the correct side (R or L).



- Or, press the push button on the hearing instrument. The box coordinating with that specific instrument will flash blue on screen. Select the correct side (R or L).

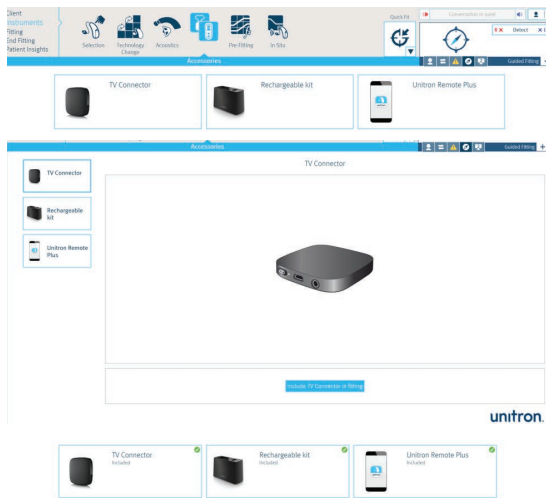


Note: You can find the link to Check Smartphone compatibility in the Instrument Selection screen. Click on this link to verify phone compatibility.



Step 5: Add accessories

Select Instruments> Accessories to see available accessories for the Moxi All. No pairing is required in the software for the TV Connector, charging base or Remote Plus App. Information in TrueFit fitting software is for record keeping purposes only.



Note: Getting Started Guide includes information about accessories

Step 6: TV Connector option

- Go to Fitting>Configure Features>Input.
- In the Wireless Programs section, select “Manual” or “automatic” (default) for the TV Connector.
- In this section (Fitting>Configure Features>Input) there is nothing to configure for Bluetooth® Phone.



Step 7: Fine tuning for wireless programs

- Go to Fitting>Tuning>Wireless (programs).
- Select TV Connector or Bluetooth Phone and adjust gain, MPO, etc.

Note: Unlink the ears and only adjust the phone ear when adjusting gain/volume for the Bluetooth® phone program.



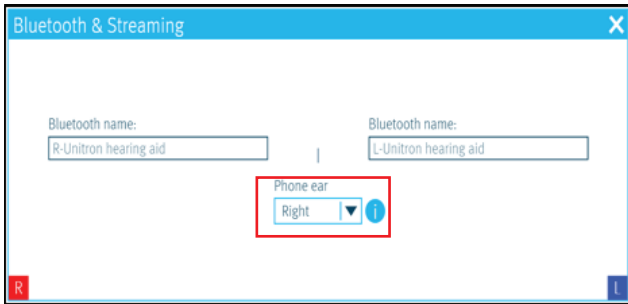
Step 8: Hearing instrument button set up

- Go to End Fitting> HI Setup.
- Moxi All supports both a short and long press functionality. The default (short press: right louder/left softer; long press: program change) allows the patient to answer the phone via the push button on the instrument. If the push button default is changed, you will see a yellow exclamation to alert you of the limited functionality.
- View the function of the push button for these 3 different situations by selecting the check mark by “Show detailed configurations.”
- Option to print “Getting Started Guide” is located at the bottom of the Push Button set up box.

Standard	Short press:	Louder	Push Button Short press: Right louder / left softer Long press - hold for 2 seconds: Program change To show complete details, print the full report: Getting Started Guides <input checked="" type="checkbox"/> Show detailed configurations
	Long press:	Program change	
TV Connector	Short press:	TV volume up Environment volume down	
	Long press:	Program change	
Bluetooth phone	Short press:	Answer phone call Call volume up Environment volume down	
	Long press:	Reject phone call Hang up phone call	

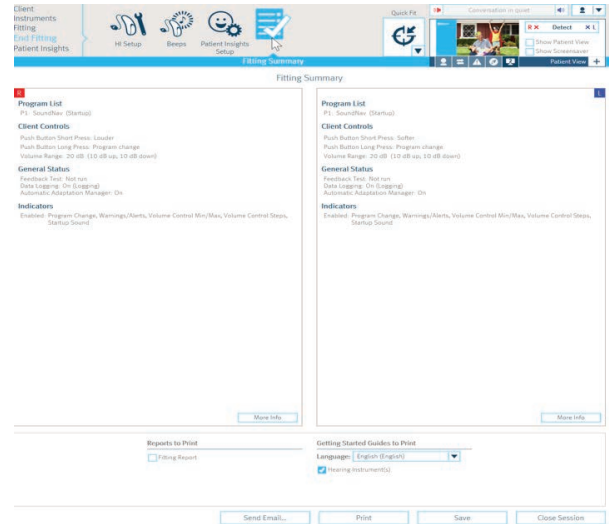
Step 9: Select phone ear

- Go to End Fitting>HI Setup and select the box near the bottom of the screen labelled “Bluetooth & Streaming.”
- Select phone ear (default is right ear).
- Rename instruments, if desired (default names are R-Unitron hearing aid and L-Unitron hearing aid). *This name will appear in the Bluetooth® section of the phone.*




Step 10: Review fitting summary

- Go to End Fitting> Fitting Summary.



Once hearing instruments have been programmed in the fitting software the hearing instruments will automatically connect to Unitron TrueFit fitting software when you reopen the patient’s previous session.

 **Note: Close software prior to pairing the hearing instruments to the phone.**