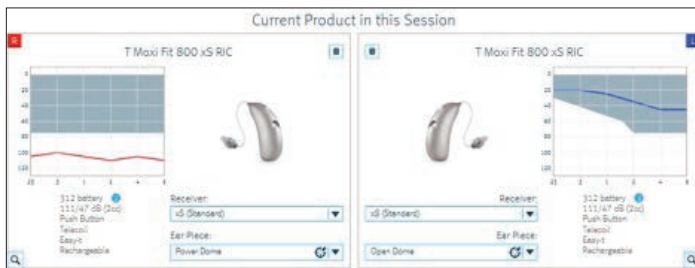


# Programming a CROS or BiCROS using wireless streaming

Moxi, Stride and Inera wireless products driven by Tempus

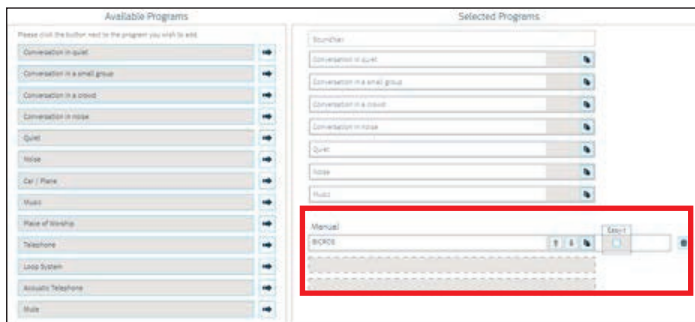
Use this guide to program any of the Tempus™ platform products (Moxi™, Stride™ and Inera™) that have a binaural phone feature as a wireless CROS or BiCROS (i.e., you cannot use a Stride 10A wireless CIC/mini canal). In this example, the right ear is the unaidable ear and the left ear is the better ear with some hearing loss.

## Step 1: Detect the hearing instruments

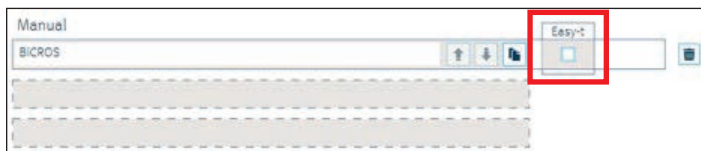


## Step 2: Fitting/Program Manager screen

- Add a Telephone or an Acoustic Telephone Program.
- Change the program name to CROS or BiCROS if desired. Highlight the word “Telephone” or “Acoustic Telephone” under Manual and type “CROS or BiCROS.”

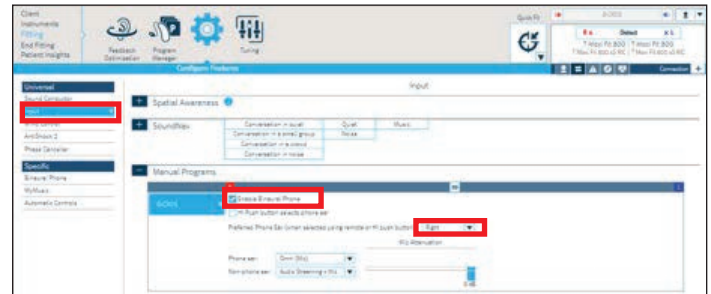


- Uncheck the Easy-t box.

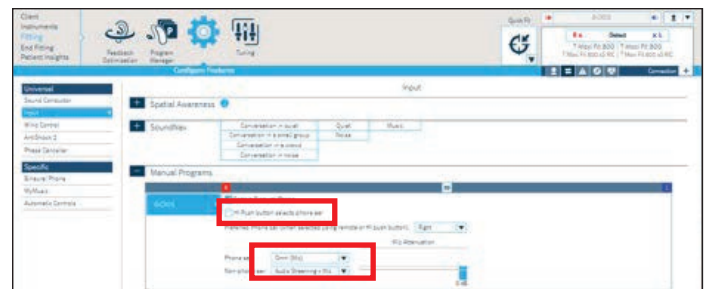


## Step 3: Fitting/Configure Features screen

- From the menu on the left, select Input; then under Manual Programs, select your newly-created CROS or BiCROS program
- Enable Binaural Phone.
- Preferred Phone Ear = unaidable ear or transmitter.

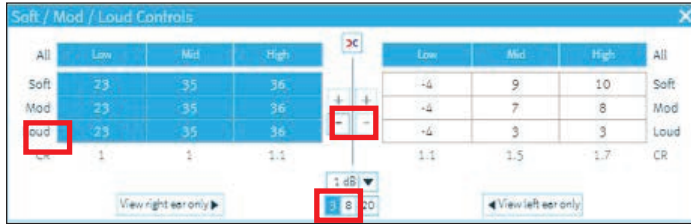


- Change Input on the Phone Ear to “Omni (Mic)”.
- The input on the Non-Phone Ear (=better hearing side) should be “Audio Streaming + Mic.”
- “HI Push button selects phone ear” should be unchecked.



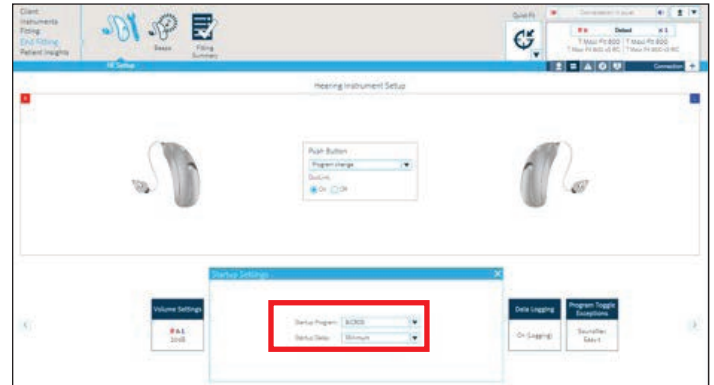
## Step 4: Fitting/Tuning Screen

- Select the CROS or BiCROS program from the menu on the left.
- Click on the Soft/Mod/Loud Controls box at the bottom of the screen.
- Click the “Unlink” button, followed by clicking on the word “All” for the unaidable side.
- Reduce gain completely in all bands.

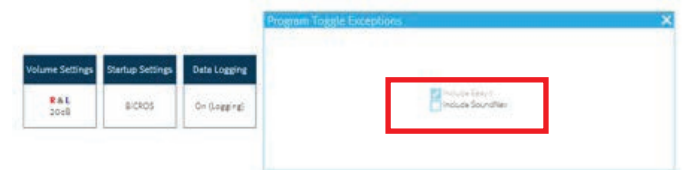


## Step 5: End fitting/HI Setup screen

- Click on the Startup Settings box at the bottom of the screen and change the Startup program to Program 2 (in this example the BiCROS program).
- The hearing aid will now start in the second program.



- Click on the Program Toggle Exceptions box and uncheck “Include SoundNav,” which will make BiCROS the only program in this aid.



- Now the Binaural Phone program is configured as a CROS or BiCROS, transmitting sound from the unaidable ear to the better ear via wireless audio streaming.
- Save to the hearing instruments & database (and accessories, if any).

More than one Telephone or Acoustic Telephone program can be added and configured similarly if needed.

While programming Tempus devices with the iCube II, the transmitter on the unaidable ear is live; this gives the hearing healthcare provider an opportunity to make fine-tuning adjustments with an active CROS mic and allows the patient to immediately experience the benefit of wearing a CROS or BiCROS. It is important to note that the transmitter is not live while programming with a NOAHlink or HIPRO.

