

# Stride™ B-PR

## Hearing aid user guide

Powered by **Blu**



A Sonova brand

**unitron**™ Love the  
experience

This user guide applies to the following models:

### Hearing aids



Stride™ B9-PR

Stride™ B7-PR

Stride™ B5-PR

Stride™ B3-PR

Stride™ B1-PR\*

Stride™ B-PR FLEX:TRIAL

### Non wireless charging accessory



Unitron Charger

\*not available in all markets



## Your hearing aids

Hearing care professional: \_\_\_\_\_

\_\_\_\_\_

Telephone: \_\_\_\_\_

Model: \_\_\_\_\_

Serial number: \_\_\_\_\_

Warranty: \_\_\_\_\_

Program 1 is for: \_\_\_\_\_

Program 2 is for: \_\_\_\_\_

Program 3 is for: \_\_\_\_\_

Program 4 is for: \_\_\_\_\_

Date of purchase: \_\_\_\_\_

## Quick reference

### Low battery warning



2 beeps every  
30 minutes

### Multi-function button with indicator light

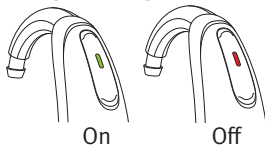


### Turning hearing aids on/off

Press and hold the lower part of the button on each hearing aid for 3 seconds until the indicator lights change.

**On:** Indicator light is temporarily solid green

**Off:** Indicator light is temporarily solid red



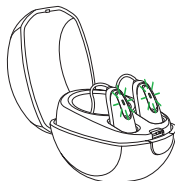
① **Before using your hearing aids for the first time, it is recommended to charge them for 3 hours.**

### Charging your hearing aids

Insert the hearing aids firmly into the charger. Watch that the lights are blinking to confirm the hearing aids are charging.

**Charging:** Slow blinking indicator light

**Fully charged:** Solid green indicator light



Thank you for choosing these hearing aids. Unitron is a hearing solution company that believes people should feel really good about the entire hearing care experience, start to finish. Our ingenious products, technologies, services and programs offer a level of personalization you can't get anywhere else. Get ready to **Love the experience.™**

Please read the User guide carefully to make sure that you understand and get the best out of your hearing aids. Training is not required for handling of this device. A hearing care professional will help setup the hearing aids to your individual preferences during the sales consultation.

For more information regarding features, benefits, setup, use and maintenance or repairs of your hearing aid and accessories – contact your hearing care professional or manufacturer representative. Additional information can be found in the Specification sheet of your product.

## Table of contents

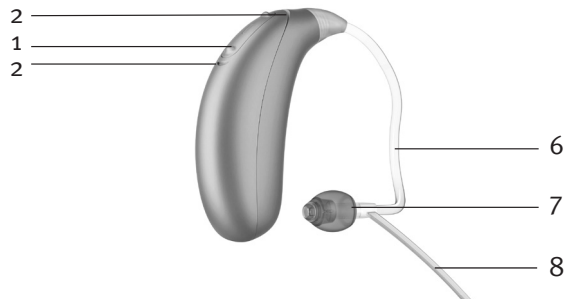
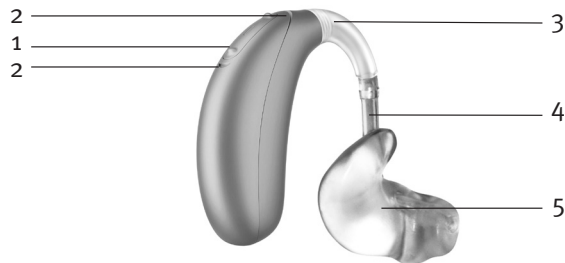
---

1. Your hearing aids at a glance .....	2
2. Turning your hearing aids on and off .....	5
3. Putting your hearing aids on your ears .....	6
4. Operating instructions .....	8
Your rechargeable hearing aids.....	12
Charging your hearing aids.....	14
Pairing your mobile phone with your hearing aids .....	19
Using your mobile phone with your hearing aids .....	22
TV Connector .....	27
Tinnitus masker .....	28
Flight mode.....	29
5. Caring for your hearing aids.....	30
6. Accessories .....	34
7. Troubleshooting guide .....	36
8. Important safety information.....	43
Tinnitus masker .....	64
9. Operating, transport and storage conditions .....	67
10. Information and explanation of symbols .....	68
11. Compliance information.....	72

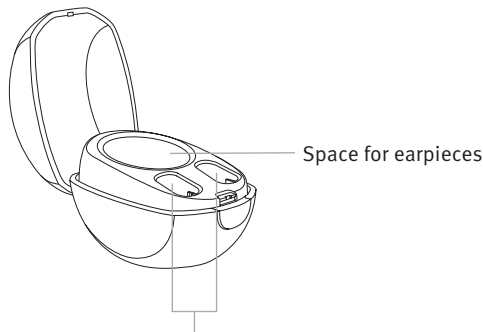
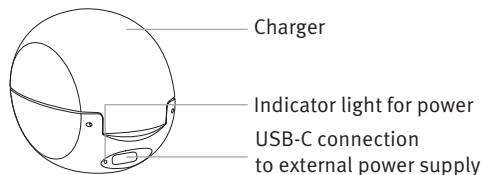
## 1. Your hearing aids at a glance

- 1 **Multi-function button with indicator light** - switches between listening programs, changes the volume level, and accepts or rejects mobile phone calls depending on your customized fitting
- 2 **Microphone** - sound enters your hearing aids through the microphones. **Microphone shield** - protects microphones from dirt & debris
- 3 **Earhook** - your custom made earmold attaches to your hearing aids using the earhook
- 4 **Tubing** - part of the earmold that attaches it to the earhook
- 5 **Earmold** - allows the sound to pass from the hearing aids to the ear and holds the hearing aids in place
- 6 **Slim tube** - sound travels down the slim tube to the ear canal
- 7 **Dome** - holds the slim tube in place in your ear canal
- 8 **Retention piece** - helps prevent the dome and slim tube from moving out of the ear canal

## Stride B-PR BTE hearing aids

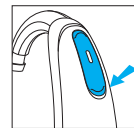


## Charger



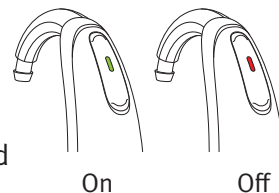
## 2. Turning your hearing aids on and off

Your hearing aids will turn on automatically when removed from the charger. To turn hearing aids on and off when not using the charger, press and hold the lower part of the button on each hearing aid for 3 seconds until the indicator lights change.



**On:** Indicator light is temporarily solid green

**Off:** Indicator light is temporarily solid red



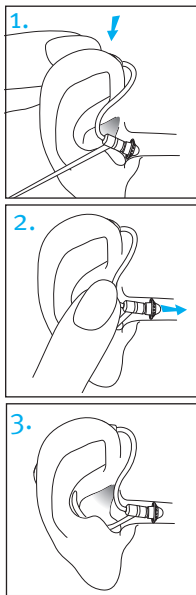
- ① Before using your hearing aids for the first time, it is recommended to charge them for 3 hours.
- ① When you turn your hearing aids on you may hear a start-up melody.

### 3. Putting your hearing aids on your ears

Your hearing aids will be color-coded with a marking on the outside of the hearing aid: red = right ear; blue = left ear.

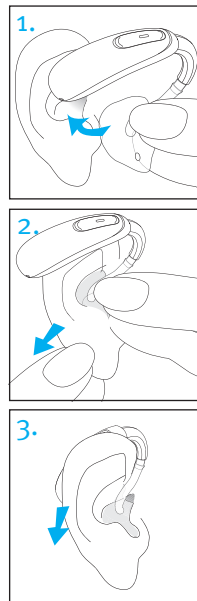
#### Hearing aids with domes

1. Place the hearing aid over the top of your ear.
2. Hold the tube where it attaches to the dome and gently push the dome into your ear canal. The tube should lie flush against your head and not stick out.
3. If there is a retention piece, place it in your ear so it rests at the bottom of the opening of your ear canal.



#### Hearing aids with earmolds

1. Hold the earmold between your thumb and index finger, with the opening facing toward your ear canal and the hearing aid resting above your ear.
2. Carefully insert the earmold in your ear. You may need to twist it slightly to the back. The earmold should fit into your ear snugly and comfortably. Gently pull down and back on your earlobe to help you insert the earmold into your ear canal more easily.
3. Place the hearing aid over the top of your ear.



#### Labeling

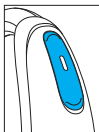
The serial number and year of manufacture are located under the colored hearing aid marking.

## 4. Operating instructions

Your hearing aids come with a multi-function button that allows you to further adjust them. You may also use the multi-function button to accept and reject calls to your paired mobile phone. You may also use the optional Remote Control or Remote Plus app to control your hearing aids.

- ① [These instructions describe the default multi-function button settings. Your hearing care professional may change the functionality of the buttons. See your hearing care professional for more information.](#)

### Multi-function button



The multi-function button on your hearing aids can be both a volume control and a program control.

### □ Program control

Each time you push the upper part of the button on either hearing aid for longer than 2 seconds, you will move to the next hearing aid program. Your hearing aids beep to indicate which program you are in.

Program setting	Beeps
Program 1 (e.g. automatic program)	♪ 1 beep
Program 2 (e.g. speech in noise)	♪♪ 2 beeps
Program 3 (e.g. Telephone)	♪♪♪ 3 beeps
Program 4 (e.g. music)	♪♪♪♪ 4 beeps

Please see the front of this booklet for a listing of your personalized programs.



## □ Volume control

To adjust the volume of your environment:

- Push the upper part of the hearing aid button to increase the volume, and
- Push the lower part of the hearing aid button to decrease the volume

As you change the volume, your hearing aids will beep.

Volume setting	Beeps
Suggested volume level	♪ 1 beep
Turning volume up	♪ short beep
Turning volume down	♪ short beep
Maximum volume level	♪♪ 2 beeps
Minimum volume level	♪♪ 2 beeps

## Tap control

If paired with a **Bluetooth**® enabled device, multiple functions can be accessed using tap control e.g. accept/end phone call, pause/resume streaming, start/stop voice assistant.

To use tap control tap the top of your ear twice.



Bluetooth® is a registered trademark owned by the Bluetooth SIG, Inc. and used under license by Unitron.

## Your rechargeable hearing aids

---

### Battery information

- ① Before using your hearing aids for the first time, it is recommended to charge them for 3 hours.
- ① These hearing aids contain a built-in and non-removable rechargeable lithium-ion battery.

Two long beeps indicate the hearing aid battery is low. You have approximately 60 minutes before you have to charge the hearing aids (this can vary depending on the hearing aid settings).

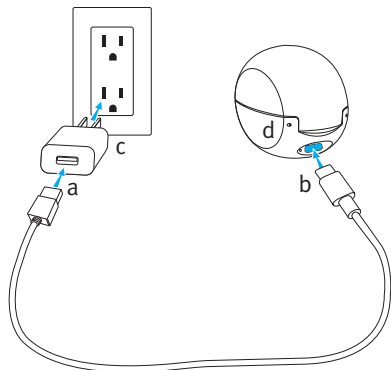
If you can't hear the low battery warning, your hearing care professional can change its pitch or loudness.

### Charging information

- ① The hearing aids must be dry before charging.
- ① Charge your hearing aids every night. If you hear the low battery warning, place your hearing aids in the charger.
- ① Please ensure to charge and use the hearing aids within operating temperature range: +5° to +40° Celsius (41° to 104° Fahrenheit).
- ① If the charger is removed from the power source during charging, the hearing aids will turn on and will start to discharge. Ensure the charger remains powered while the hearing aids are in the charger.

## Charging your hearing aids

### 1) Connecting the power supply



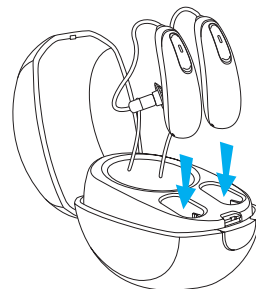
- a) Plug the larger end of the charging cable into the power supply.
- b) Plug the smaller end into the USB-C port on the charger.
- c) Plug the power supply into a power outlet.
- d) The indicator light is green when the charger is connected to the power supply.

### Power supply specification

Power supply output voltage	5 VDC +/-10%, current 1 A
Power supply input voltage	100-240 VAC, 50/60Hz, current 0.25 A
Charger input voltage	5 VDC +/-10%, current 500mA
USB cable specifications	5 V min. 1 A, USB-A to USB-C, maximum length 3 m

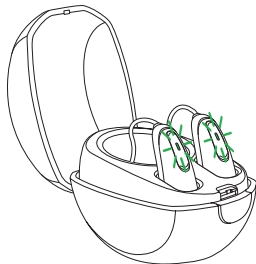
### 2) Insert the hearing aids

Insert the hearing aids firmly into the charging slots. Make sure the left and right hearing aid markings match the left (blue)/right (red) indicators in front of the charging slots. The hearing aids will automatically switch off when inserted into the charger.



### 3) Watch the indicator light

The indicator light will slowly blink until the hearing aids are fully charged. When fully charged the indicator light will be solid green.



The charging process will automatically stop when the batteries are fully charged, so the hearing aids can be safely left in the charger. It can take up to 3 hours to charge the hearing aids. The charger cover can be closed while charging.

### Understanding the indicator light

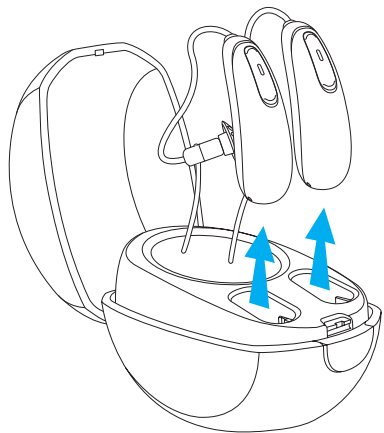
The below table indicates battery charging time from fully depleted.

Indicator light	Percentage charged	Charging time
● ● ●	0-10%	
● ● ●	11-80%	30 min (30%) 60 min (50%) 90 min (80%)
● ● ●	81-99%	
■	100%	3h

#### 4) Remove the hearing aids from the charger

Remove the hearing aids from the charging slots by pulling up and towards the front of the charger to turn them on.

- ① Do not pull the tubes to remove the hearing aids from the charger as this can damage the tubes.



#### Pairing your mobile phone with your hearing aids

1. On your phone, go to your settings menu to ensure **Bluetooth®** is on and to search for Bluetooth enabled devices.
  2. Turn your hearing aids on. Your hearing aids will remain in pairing mode for 3 minutes.
  3. Your phone will show a list of found Bluetooth enabled devices. Select your hearing aid from the list to simultaneously pair both hearing aids. You will hear a melody when your phone has been successfully paired to your hearing aids.
- ① It is only necessary to perform the pairing procedure once with each Bluetooth enabled phone.
  - ① Consult your phone user guide for instructions on pairing a Bluetooth device with your phone.

Bluetooth® is a registered trademark owned by the Bluetooth SIG, Inc. and used under license by Unitron.

## Connecting to your mobile phone

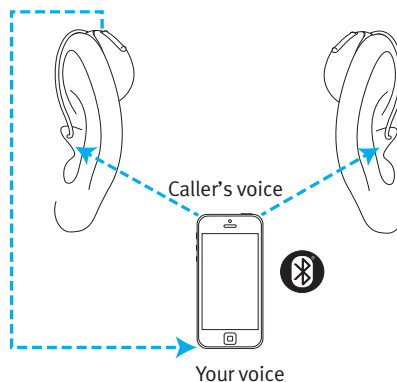
After your hearing aids have been paired to your phone, they will automatically connect again when your phone and hearing aids are turned on and in range. This can take up to 2 minutes.

- ① The connection will be maintained as long as the phone remains on and within a range of up to 10 m (30 ft).
- ① To switch a call between your hearing aids and the speaker on your mobile phone, select the audio source you would like from your phone. If you are not sure how to do this, consult the instruction manual that came with your mobile phone.

## Phone calls with a mobile phone

Your hearing aids allow direct communication with Bluetooth enabled devices. When paired and connected to a phone, you will hear the caller's voice directly in your hearing aids. Your hearing aids pick up your voice through their own microphones. Two active Bluetooth devices such as a phone can be connected to your hearing aids, with support for additional pairings.

- ① You do not need to hold your mobile phone close to your mouth, your voice is transmitted through the hearing aids to your mobile phone.



## Using your mobile phone with your hearing aids

---

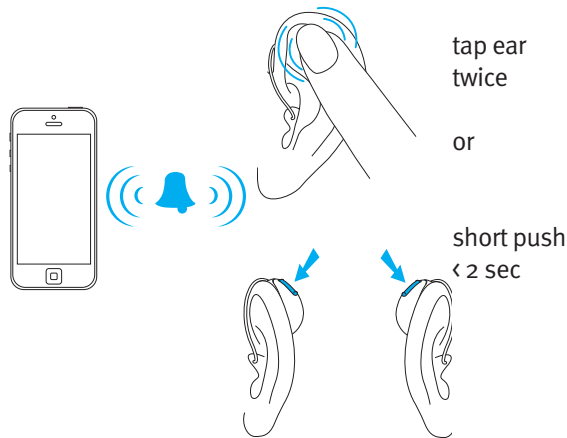
### Making a phone call

Start a call on your paired mobile phone as you normally would. You will hear the audio through your hearing aids. Your hearing aids pick up your voice through their own microphones.

### Accepting a mobile phone call

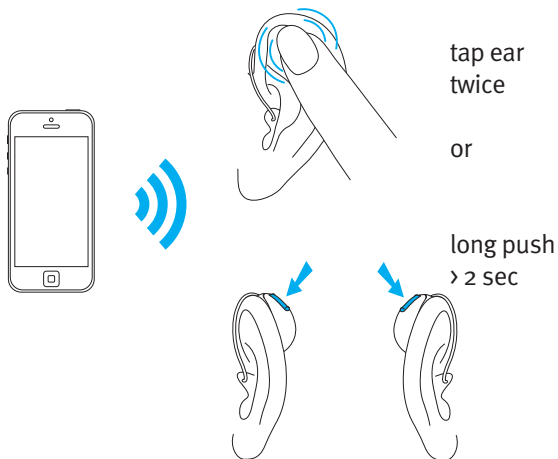
When receiving a call, an incoming call notification will be heard in the hearing aids.

The call can be accepted by tapping the top of your ear twice, or with a short push of less than 2 seconds on either the upper or lower part of the button on either hearing aid. Alternatively, accept the call on your phone as you normally would.



## Ending a phone call

End a call by tapping the top of your ear twice, or by holding down the upper or lower part of the button on either hearing aid for more than 2 seconds. Alternatively, end the call on your phone as you normally would.



## Rejecting a phone call

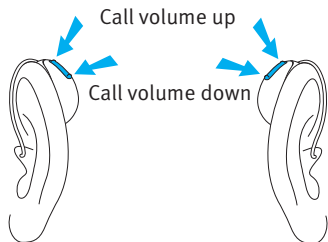
An incoming call can be rejected by holding down the upper or lower part of the button on either hearing aid for more than 2 seconds. Alternatively, reject the call on your phone as you normally would.



## Adjusting volume balance between mobile phone calls and your environment

During a call using a paired mobile phone:

- Push the upper part of the hearing aid button to increase the call volume and decrease the volume of sounds in your environment
- Push the lower part of the hearing aid button to decrease the call volume and increase the volume of sounds in your environment

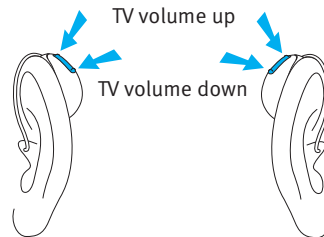


## TV Connector

### Adjusting volume balance between the TV and the sounds in your environment

While listening to TV sound through the TV Connector accessory:

- Push the upper part of the hearing aid button to increase the TV volume and decrease the volume of sounds in your environment
- Push the lower part of the hearing aid button to decrease the TV volume and increase the volume of sounds in your environment



## Tinnitus masker

---

If your hearing care professional has configured a tinnitus masker program, you can adjust the tinnitus masker level while you are in the tinnitus masker program. To adjust the noise level:

- Push the upper part of the hearing aid button to increase the tinnitus masker, and
- Push the lower part of the hearing aid button to decrease the tinnitus masker

Remote Plus app:

- Tap the advanced features button where you can adjust the tinnitus masker volume up or down

As you change the level, your hearing aids will beep.

## Flight mode

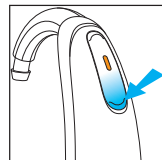
---

Your hearing aids operate in the frequency range of 2.4 GHz–2.48 GHz. When flying, some airlines require all devices to be switched into flight mode. Entering flight mode will not disable normal hearing aid functionality, only the Bluetooth connectivity functions.

### Entering flight mode

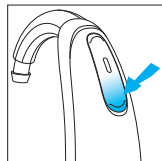
To disable the Bluetooth wireless function and enter flight mode:

With the hearing aid turned off, push and hold the lower part of the button for 7 seconds until the solid orange light appears. Then release the button.



### Exiting flight mode

To enable the Bluetooth wireless function and to exit flight mode: Switch the hearing aid off and then on using the lower part of the hearing aid button.



## 5. Caring for your hearing aids

---

### Protecting your hearing aids

- Diligent and routine care of your hearing aids and charger contribute to outstanding performance and a long service life. To ensure a long service life, Sonova AG provides a minimum of a five year service period after phase out of the respective hearing aid.
- Always remove your hearing aids when using hair care products. The hearing aids can become clogged and cease to function properly.
- Do not wear your hearing aids in the bath or shower or immerse them in water.
- If your hearing aids do become wet, do not attempt to dry them in an oven or microwave. Do not adjust any controls.
- Protect your hearing aids from excessive heat (hair dryer, vehicle glove box or dashboard).
- Ensure you do not twist or squeeze the tubes when your hearing aids are placed in their case.

- Do not drop your hearing aids or knock them against hard surfaces.

### Cleaning your hearing aids

Use a soft cloth to clean your hearing aids at the end of each day. Regular cleaning of the microphone ports with the supplied cleaning brush will ensure that your hearing aids will maintain their sound quality. Your hearing care professional can demonstrate this for you. Place the hearing aids in the charger overnight.

- ① Ear wax is natural and common. Ensuring your hearing aids are free of ear wax is an important step in your daily cleaning and maintenance routine.
- ① Never use alcohol to clean your hearing aids, earmolds or domes.
- ① Do not use sharp tools to dislodge ear wax. Sticking household items into your hearing aids or custom molds can seriously damage them.

## Cleaning your slim tubes and domes

You should have the slim tubes and domes replaced by your hearing healthcare professional approximately every three to six months or when they become stiff, brittle, or discolored.

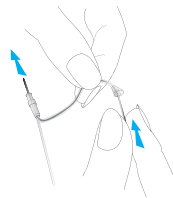


Clean the outside of the domes at the end of each day with a damp cloth. Avoid getting any water in and around the hearing aids.

You should also clean the slim tubes periodically, with the cleaning pin provided, when you begin to notice debris in and around the tubes.

1. Hold the slim tube in one hand and the hearing aid in the other hand.
2. Gently turn the hearing aid until it detaches from the slim tube.
3. Use a damp cloth to clean the outside of the slim tube and dome.
4. Remove the dome from the slim tube by pulling gently, before cleaning the slim tube.

5. Using the black cleaning pin provided in the kit, gently insert the cleaning pin where the slim tube attaches to the hearing aid and push the pin all the way through the tube.



- ① **Note:** The slim tubes and domes should never be rinsed or submerged in water as water drops may become lodged in the tube, block sound or damage the electrical components of the hearing aid.
6. Once the slim tube has been cleaned, reattach it by gently turning the hearing aid onto the slim tube.
7. Reattach the dome to the slim tube by gently pushing it back onto the threading at the end of the tube. You will feel the dome click onto the ridges of the slim tube, and you won't be able to push it any further.

## 6. Accessories

### TV Connector

The TV Connector is an optional accessory that sends sound from your TV directly to your hearing aids. The TV Connector can also transmit sound from stereo systems, computers and other audio sources.

### Remote Control

The Remote Control is an optional accessory that can be used to control volume level and program changes of the hearing aid.

### PartnerMic

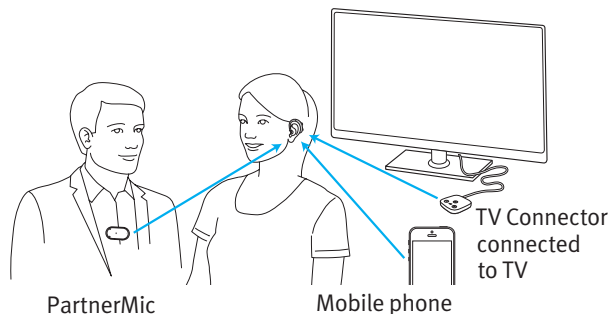
The PartnerMic is an optional accessory that can be used to stream a speaker's voice wirelessly to your hearing aids.

### RogerDirect™

Your hearing aids are compatible with Roger™ accessories. Roger accessories can be used to transmit a voice or sound source wirelessly to your hearing aids.

### Connectivity overview

The illustration below shows some of the connectivity options available for your hearing aids.



Please see the user guide that came with your accessory for more information. Please contact your hearing care professional to get a TV Connector, Remote Control, PartnerMic or Roger accessories.

## 7. Troubleshooting guide

Cause	Possible remedy
<b>Issue: will not turn on</b>	
Dead battery	Place hearing aids in powered charger
<b>Issue: indicator light blinks fast while charging</b>	
Faulty battery	Consult your hearing care professional
<b>Issue: indicator light is off when placed in the charger</b>	
Hearing aids not inserted correctly in the charger	Insert the hearing aids correctly into the charger, see “Charging your hearing aids”
Charger not connected to power source	Connect the charger to an external power source, see “Charging your hearing aids”

Cause	Possible remedy
<b>Issue: battery does not last the whole day</b>	
Hearing aids not fully charged	Place hearing aids in powered charger
Battery needs to be replaced	Consult your hearing care professional to see if a battery replacement is required
<b>Issue: no sound</b>	
Not turned on	Turn on
Low/dead battery	Place hearing aids in powered charger
Custom molds/domes blocked with ear wax	Clean custom molds/domes. See “Cleaning your hearing aids.” Consult your hearing care professional
Plugged microphones	Consult your hearing care professional

Cause	Possible remedy
<b>Issue: not loud enough</b>	
Low volume	Turn up volume; see hearing care professional if problem persists
Low battery	Place hearing aids in powered charger
Custom molds/domes not inserted properly	See “3. Putting your hearing aids on your ears.” Remove and reinsert carefully
Change in hearing	Consult your hearing care professional
Custom molds/domes blocked with ear wax	Clean custom molds/domes. See “Cleaning your hearing aids.” Consult your hearing care professional
Plugged microphones	Consult your hearing care professional

Cause	Possible remedy
<b>Issue: intermittent sound</b>	
Low battery	Place hearing aids in powered charger
<b>Issue: two long beeps</b>	
Low battery	Place hearing aids in powered charger
<b>Issue: whistling</b>	
Custom molds/domes not inserted properly	See “3. Putting your hearing aids on your ears.” Remove and reinsert carefully
Hand/clothing near ear	Move hand/clothing away from ear
Poorly fitting custom molds/domes	Consult your hearing care professional

Cause	Possible remedy
-------	-----------------

**Issue: not clear, distorted**

Poorly fitting custom molds/domes	Consult your hearing care professional
-----------------------------------	--

Custom molds/domes blocked with ear wax	Clean custom molds/domes. See “Cleaning your hearing aids.” Consult your hearing care professional
---	--

Low battery	Place hearing aids in powered charger
-------------	---------------------------------------

Plugged microphones	Consult your hearing care professional
---------------------	--

**Issue: custom molds/domes falling out of ear**

Poorly fitting custom molds/domes	Consult your hearing care professional
-----------------------------------	--

Custom molds/domes not inserted properly	See “3. Putting your hearing aids on your ears.” Remove and reinsert carefully
--	--

**Issue: low volume on landline telephone**

Telephone not positioned properly	Move telephone receiver around ear for clearer signal
-----------------------------------	---

Hearing aids require adjustment	Consult your hearing care professional
---------------------------------	--

Cause	Possible remedy
-------	-----------------

**Issue: mobile phone calls not being heard through hearing aid**

Hearing aid is in flight mode	Turn hearing aid off and back on again
-------------------------------	--

Hearing aid is not paired to the phone	Pair your hearing aid to your mobile phone (again)
--	--

**Issue: indicator lights on the hearing aids are solid red while in charger**

Hearing aids are out of their operating temperature range	Ensure the hearing aids are within the operating temperature range of +5° to +40° Celsius (41° to 104° Fahrenheit)
---	--



Cause	Possible remedy
-------	-----------------

Issue: charging does not start

Charger is not connected to a power supply	Connect the charger to a power supply
--	---------------------------------------

Hearing aids are not inserted correctly into the charger	Insert hearing aids correctly into the charger, see “Charging your hearing aids”
--	--

Hearing aids do not light up in the charger	Unplug the charger with the hearing aids inserted, and plug the charger back in again
---	---

Charge contacts are not clean	Clean charging contacts using cleaning brush or cloth
-------------------------------	---

For any problems not listed in the guide, contact your hearing care professional.

## 8. Important safety information

Please read the relevant safety information and limitations-of-use information on the following pages before using your hearing aid.

### Intended use

The intended use of hearing aids is to amplify and transmit sound to the ears and thereby compensate for impaired hearing.

The charger is an accessory to a medical device and has no therapeutic or diagnostic use on its own. It is intended to charge rechargeable hearing aids.

The Tinnitus feature is intended for use by people with tinnitus who also desire amplification. It provides supplementary noise stimulation which can help defocus the user's attention from their tinnitus.

### Indications

General clinical indications for the use of hearing aids and Tinnitus feature are:

- Presence of hearing loss
- Uni- or bilateral
- Conductive, sensorineural or mixed
- Mild to profound
- Presence of a chronic tinnitus (only applicable for devices which provide the Tinnitus feature).

### Contraindications

General clinical contraindications for the use of hearing aids and Tinnitus software are:

- Hearing loss is not in the fitting range of the hearing aid (i.e. gain, frequency response)
- Acute tinnitus
- Deformity of the ear (i.e. closed ear canal; absence of the auricle)
- Neural hearing loss (retro-cochlear pathologies such as absent/non-viable auditory nerve)

The primary criteria for the referral of a patient for a medical or other specialist opinion and / or treatment are as follows:

- Visible congenital or traumatic deformity of the ear;
- History of active drainage from the ear in the previous 90 days;
- History of sudden or rapidly progressive hearing loss in one or both ears within the previous 90 days;
- Acute or chronic dizziness;
- Audiometric air-bone gap equal to or greater than 15 dB at 500 Hz, 1000 Hz and 2000 Hz;
- Visible evidence of significant cerumen accumulation or a foreign body in the ear canal;
- Pain or discomfort in the ear;
- Abnormal appearance of the eardrum and ear canal such as:
  - Inflammation of the external auditory canal,

- Perforated eardrum;
- Other abnormalities which the HCP believes are of medical concern

The HCP may decide that a referral is not appropriate or in the best interests of the patient when the following applies:

- When there is sufficient evidence that the condition has been fully investigated by a medical specialist and any possible treatment has been provided;
- The condition has not worsened or changed significantly since the previous investigation and / or treatment.

If the patient has given their informed and competent decision not to accept advice to seek a medical opinion, it is permissible to proceed to recommend appropriate hearing aid systems subject to the following considerations:

- The recommendation will not have any adverse effects on the patients health or general well being;

- The records confirm that all necessary considerations about the patient's best interests have been made

If legally required, the patient has signed a disclaimer to confirm that the referral advice has not been accepted and that it is an informed decision.

Clinical benefit:

Improvement of speech understanding

Side effects:

Physiological side-effects of hearing aids like tinnitus, dizziness, wax build up, too much pressure, sweating or moisture, blisters, itching and/or rashes, plugged or fullness and their consequences like headache and/or ear pain, may be resolved or reduced by your hearing care professional. Conventional hearing aids have the potential to expose patients to higher levels of sound exposure, which might result in threshold shifts in the frequency range affected by acoustic trauma.

## Intended patient population

The intended patient population are people with mild to profound hearing loss (ISO 60115-18) from 8 years of age. The intended patient population for tinnitus software feature are people from 18 years of age.

## Intended users:

Person with hearing loss using a hearing aid and their caregivers. Hearing care professional responsible for adjusting the hearing aid.





## Important information

- ① The hearing aids (specially programmed for each hearing loss) must only be used by the intended person. They should not be used by any other person as they could damage hearing.
- ① Hearing aids will not restore normal hearing and will not prevent or improve a hearing impairment resulting from organic conditions.
- ① Hearing aids should only be used as directed by your physician or hearing care professional.
- ① The use of hearing aids is only part of hearing rehabilitation; auditory training and lip reading instruction may be required as well.
- ① In most cases, infrequent use of hearing aids does not provide full benefit. Once you have become accustomed to your hearing aids, wear your hearing aids everyday all day.

- ① Feedback, poor sound quality, too loud or too soft sounds, inadequate fitting or problems when chewing or swallowing, can be resolved or improved during the fine-tuning process at the fitting procedure by your hearing care professional.
- ① Any serious incident that has occurred in relation to the device should be reported to the manufacturer representative and the competent authority of the state of residence. The serious incident is described as any incident that directly or indirectly led, might have led or might lead to any of the following:
  - the death of a patient, user or other person
  - the temporary or permanent serious deterioration of a patient's, user's or other person's state of health
  - a serious public health threat

To report an unexpected operation or event, please contact the manufacturer or a representative.

## Warnings

-  **WARNING:** This device uses a lithium button/coin battery. These batteries are hazardous and can cause severe or fatal injuries in 2 hours or less if they are swallowed or placed inside any part of the body, whether the battery is used or new! Keep out of the reach of children, individuals with cognitive impairment, or pets. If you suspect that a battery was swallowed or placed inside any part of the body, immediately consult your physician without any delay!
-  These rechargeable hearing aids contain lithium-ion batteries that can be taken onto airplanes as carry-on luggage.
-  Your hearing aids operate in the frequency range of 2.4 GHz–2.48 GHz. When flying please check if flight operator requires devices to be switched into flight mode.
-  Changes or modifications to the hearing aids that are not explicitly approved by the manufacturer are not permitted. Such changes may damage your ear or the hearing aids.

- ⚠ Do not use the hearing aids and charging accessories in explosive areas (mines or industrial areas with danger of explosions, oxygen rich environments or areas where flammable anesthetics are handled) or where electronic equipment is prohibited.
- ⚠ Allergic reactions to hearing aids are unlikely. However, if you experience itching, redness, soreness, inflammation or a burning sensation in or around your ears, inform your hearing care professional and contact your physician.
- ⚠ In the unlikely case that any parts remain in the ear canals after the removal of the hearing aids, contact a physician immediately.
- ⚠ Hearing programs in the directional microphone mode reduce background noises. Please be aware that warning signals or noises coming from behind, e. g. cars, are partially or entirely suppressed.

- ⚠ These hearing aids are not for children below 36 months. The usage of this device by children and individuals with cognitive impairment should be supervised at all times to ensure their safety. The hearing aids are small devices and contain small parts. Do not leave children and individuals with cognitive impairment unsupervised with these hearing aids. If swallowed, consult a physician or hospital immediately as the hearing aids or their parts can cause choking.
- ⚠ Keep the charger out of reach of children, individuals with cognitive impairment and pets. If the drying capsule is swallowed, consult a physician or hospital immediately.
- ⚠ Do not make a wire connection from your hearing aids to any external audio sources like radio etc. that could cause injuries on your body (electric shock).
- ⚠ Do not cover the whole charger while charging, e.g. with a cloth etc.

- ⚠ The following is only applicable for persons with active implantable medical devices (i.e. pacemakers, defibrillators, etc.):
  - Keep the wireless hearing aids at least 15 cm (6 inches) away from the active implant.
  - If you experience any interference, do not use the wireless hearing aids and contact the manufacturer of the active implant. Please note that interference can also be caused by power lines, electrostatic discharge, airport metal detectors etc.
  - Keep magnets at least 15 cm (6 inches) away from the active implant.
  - If using a wireless accessory, consult safety information in your accessory user guide.
- ⚠ Use of this equipment adjacent to or stacked with other equipment should be avoided because it could result in improper operation. If such use is necessary, this equipment and the other equipment should be observed to verify that they are operating normally.

- ⚠ Use of accessories, transducers and cables other than those specified or provided by the manufacturer of this equipment could result in increased electromagnetic emissions or decreased electromagnetic immunity of this equipment and result in improper operation.
- ⚠ Portable RF communications equipment (including peripherals such as antenna cables and external antennas) should be used no closer than 30 cm (12 inches) to any part of the hearing aids, including cables specified by the manufacturer. Otherwise, degradation of the performance of this equipment could result.
- ⚠ The USB-C port of the charger is to be used for the described purpose only.
- ⚠ For charger, use only EN60950-1\* and/or EN60601-1 certified equipment with an output rating of 5 VDC. Max 1A.

\* Note: this standard may not be valid anymore in your country, please refer to IEC 62368-1

- ⚠ Special care should be exercised in wearing hearing aids when maximum sound pressure levels exceed 132 decibels. There may be a risk of impairing your remaining hearing. Speak with your hearing care professional to ensure the maximum output of your hearing aids is suitable for your particular hearing loss.
- ⚠ Avoid strong physical impacts to the ear when wearing a hearing aid with customized earpiece. The stability of customized earpieces is designed for normal use. A strong physical impact to the ear (e.g. during sports) may cause the customized earpiece to break. This may lead to perforation of the ear canal or eardrum.
- ⚠ After mechanical stress or shock to the customized earpiece, please ensure that it is intact before placing it in the ear.
- ⚠ The majority of hearing aid users have a hearing loss for which a deterioration in hearing is not to be expected with regular use of a hearing aid in everyday situations. Only

a small group of hearing aid wearers with hearing loss, may be at risk of deterioration in hearing after a long period of use.

### Note to hearing care professional

- ⚠ Domes should never be fitted on clients with perforated eardrums, exposed middle ear cavities, or surgically altered ear canals. In the case of such a condition, we recommend to use a customized earmold.

### Product safety

- ① These hearing aids are water resistant and not waterproof. They are designed to withstand normal activities and occasional accidental exposure to extreme conditions. Never immerse your hearing aids in water. These hearing aids are not specifically designed for extended periods of water submersion on a continual basis, that is worn in activities such as swimming or bathing. Always remove your hearing aids before these activities, as the hearing aids contain sensitive electronic parts.



- ① Never wash the microphone inputs. Doing so could cause it to lose its special acoustic features.
- ① Protect your hearing aids from heat (never leave near a window or in the car). Never use a microwave or other heating devices to dry your hearing aids (due to risk of fire or explosion). Ask your hearing care professional about suitable drying methods.
- ① Do not place the charger close to an induction cooking surface. Conductive structures inside the charger could absorb inductive energy resulting in thermal destruction.
- ① The dome should be changed every three months or when it becomes stiff or brittle. This is to prevent the dome from detaching from the tube spout during insertion into or removal from the ear.
- ① Do not drop your hearing aids. Dropping onto a hard surface can damage your hearing aids.

- ① Charger and power supply must be protected against shocks. If the charger or power supply is damaged after a shock, the devices must not be used anymore.
- ① Store your hearing aids in the charger if you are not using them for a long period of time.
- ① Special medical or dental examination including radiation described below, may adversely affect the correct functioning of your hearing aids. Remove and keep them outside the examination room/area before undergoing:
  - Medical or dental examination with X-ray (also CT scan).
  - Medical examinations with MRI/NMRI scans, generating magnetic fields.
  - Hearing aids don't need to be removed when passing security gates (airports etc.). If X-ray is used at all, it will be in very low doses, and will not affect the hearing aids.
- ① Do not use your hearing aid or your charger in areas where electronic equipment is prohibited.

- ① The hearing aids have to be dry before charging. Otherwise the charging reliability cannot be guaranteed.
- ① Only use the charger and power supply provided by the manufacturer for charging. Otherwise, the device(s) may be damaged.
- ① Your hearing aids use the most modern components to provide the best possible sound quality in every listening situation. However, communication devices such as digital mobile phones can create interference (a buzzing sound) in hearing aids. If you experience interference from a mobile phone being used close by, you can minimize this interference in a number of ways. Switch your hearing aids to another program, turn your head in a different direction or locate the mobile phone and move away from it.

- ① These hearing aids are classified as IP68. This means that they are water and dust resistant and designed to withstand daily life situations. They can be worn in the rain but should not be fully submerged in water or used when taking a shower, swimming or other water activities. These hearing aids should never be exposed to chlorinated water, soap, salt water or other liquids with a chemical content.
- ① Your hearing aids contain lithium-ion batteries with a Watt hour rating <20 Wh which have been tested according to UN 38.3 of the “UN Manual of Tests and Criteria” and should be shipped in accordance with all the rules and regulations on the safe shipment of lithium-ion batteries.

## Mobile phone compatibility rating

Some hearing aid users have reported a buzzing sound in their hearing aids when they are using mobile phones, indicating that the mobile phone and hearing aids may not be compatible. According to the ANSI C63.19 standard (ANSI C63.19-2011 American National Standard Methods of Measurement of Compatibility Between Wireless Communications Devices and Hearing Aids), the compatibility of particular hearing aids and a mobile phone can be predicted by adding the rating for the hearing aid immunity to the rating for the mobile phone emissions. For example, the sum of the hearing aid rating of 4 (M<sub>4</sub>) and a telephone rating of 3 (M<sub>3</sub>) would result in a combined rating of 7. Any combined rating that equals at least 5 would provide “normal use”; a combined rating of 6 or greater would indicate “excellent performance.”

The immunity of these hearing aids is at least M<sub>4</sub>. The equipment performance measurements, categories and system classifications are based upon the best information available but cannot guarantee that all users will be satisfied.

- ① The performance of the individual hearing aids may vary with individual mobile phones. Therefore, please try these hearing aids with your mobile phone or, if you are purchasing a new phone, please be sure to try it with your hearing aids prior to purchase.

## Tinnitus masker

---

Tinnitus masker uses broadband noise to provide temporary relief of tinnitus.

### Tinnitus masker warnings

- ⚠ The tinnitus masker is a broadband sound generator. It provides a means of sound enrichment therapy that can be used as part of a personalized tinnitus management program to provide temporary relief from tinnitus.
- ⚠ The underlying principle of sound enrichment is to provide supplementary noise stimulation which can help defocus your attention from your tinnitus and avoid negative reactions. Sound enrichment, coupled with instructional counseling, is an established approach to managing tinnitus.
- ⚠ Air conduction hearing aids with the tinnitus masker are to be fitted by a hearing care professional familiar with the diagnosis and management of tinnitus.

- ⚠ Should you develop any side effects while using the tinnitus masker, such as headaches, nausea, dizziness or heart palpitations or experience a decrease in auditory function such as decreased loudness tolerance, worsening of tinnitus, or speech not as clear, you should discontinue use of the device and seek medical attention.
- ⚠ The volume of the tinnitus masker can be set to a level which could lead to permanent hearing damage when used for a prolonged period of time. Should the tinnitus masker be set to such a level in your hearing aids, your hearing care professional will advise you of the maximum amount of time per day you should use the tinnitus masker. The tinnitus masker should never be used at uncomfortable levels.

## Important information

- ① The tinnitus masker generates sounds that are used as part of your personalized temporary tinnitus management program to provide relief from tinnitus. It should always be used as prescribed by a hearing care professional who is familiar with the diagnosis and treatment of tinnitus.
- ① Good health practice requires that a person reporting tinnitus have a medical evaluation by a licensed ear physician before using a sound generator. The purpose of such an evaluation is to ensure that medically treatable conditions, which may be causing tinnitus, are identified and treated prior to using a sound generator.
- ① The tinnitus masker is intended for adults 18 years of age or older who have both hearing loss and tinnitus.

## 9. Operating, transport and storage conditions

The product is designed such that it functions without problems or restrictions if used as intended, unless otherwise noted in these user guides.

Please ensure to use, charge, transport and store the hearing aids according to the following conditions:

	Use	Charging	Transport	Storage
<b>Temperature</b>				
Maximum range	+5° to +40°C (41° to 104°F)	+5° to +40°C (41° to 104°F)	-20° to +60°C (-4° to 140°F)	-20° to +60°C (-4° to 140°F)
Recommended range	+5° to +40°C (41° to 104°F)	+7° to +32°C (45° to 90°F)	0° to +20°C (32° to 68°F)	0° to +20°C (32° to 68°F)
<b>Humidity</b>				
Maximum range	0% to 85% (non condensing)	0% to 85% (non condensing)	0% to 70%	0% to 70%
Recommended range	0% to 60% (non condensing)	0% to 60% (non condensing)	0% to 60%	0% to 60%
<b>Atmospheric pressure</b>				
	500 hPa to 1060 hPa	500 hPa to 1060 hPa	500 hPa to 1060 hPa	500 hPa to 1060 hPa

## 10. Information and explanation of symbols

---



With the CE symbol, Sonova AG confirms that this product – including accessories – meets the requirements of the Medical Devices Regulation MDR 2017/745 as well as the Radio Equipment Directive 2014/53/EU.

The numbers after the CE symbol correspond to the code of certified institutions that were consulted under the above-mentioned directives.

---



This symbol indicates that the products described in these user instructions adhere to the requirements for an applied part of Type B of EN 60601-1. The surface of the hearing aid is specified as applied part of Type B.

---



Indicates the medical device manufacturer, as defined in the Medical Device Regulation (EU) 2017/745.

---



Indicates the Authorized representative in the European Community. The EC REP is also the importer to the European Union.

---



This symbol indicates that it is important for the user to read and take into account the relevant information in these user guides.

---



Indicates that the device is a medical device.

---



Indicates the manufacturer's catalogue number so that the medical device can be identified

---



This symbol indicates that it is important for the user to read and take into account the relevant information in this user guide.

---



This symbol indicates that it is important for the user to pay attention to the relevant warning notices in this user guide.

---



Important information for handling and effective use of the product.

---



Copyright symbol

---



The symbol with the crossed-out garbage bin is to make you aware that this device may not be thrown away as normal household waste. Please dispose of old or unused devices, at waste disposal sites intended for electronic waste, or give your device to your hearing care professional for disposal. Proper disposal protects the environment and health.

---



The Bluetooth® word mark and logos are registered trademarks owned by Bluetooth SIG, Inc. and any use of such marks by Sonova AG is under license. Other trademarks and trade names are those of their respective owners.

---

Stride

Stride is a trademark of Sonova.

---

IP68

IP Rating = Ingress Protection Rating. IP68 rating indicates that the hearing aid is water and dust resistant. It survived continuous immersion in 1 meter of water for 60 minutes and 8 hours in a dust chamber as per the IEC 60529 standard

---



Date of manufacture



Serial number



Transportation and storage temperature limitation



Transportation and storage humidity limitation



Transportation and storage atmospheric pressure limitation



Keep dry



This symbol confers that the electromagnetic interference from the device is under limits approved by the US Federal Communications Commission.



This symbol indicates that this is a Prescription Device. CAUTION: U.S. Federal law restricts this device to sale by or on the order of a physician or hearing care professional (for US only).



This symbol indicates that it is important for the user to pay attention to the relevant warning notices related to batteries in these user guides.

### Symbols applicable to the European power supply only



Power supply with double isolation



Device designed for indoor use only.



Safety isolating transformer, short circuit proof

## 11. Compliance information

---

### Declaration of conformity

Hereby, Sonova AG declares that this product meets the requirements of the Medical Devices Regulation MDR 2017/745 and complies with Radio Equipment Directive 2014/53/EU. The full text of the EU Declarations of Conformity can be obtained from the manufacturer via the following web address: [www.sonova.com/en/certificates](http://www.sonova.com/en/certificates).

#### Australia/New Zealand:



**R-NZ**

Indicates a device's compliance with applicable Radio Spectrum Management's (RSM) and Australian Communications and Media Authority (ACMA) regulatory arrangements for the legal sale in New Zealand and Australia. The compliance label R-NZ is for radio products supplied in the New Zealand market under conformity level A1

The hearing aid described in this user guide is certified under:

Standard hearing system

	USA - FCC ID:	Canada - IC:
Stride B-PR	KWC-BPR	2262A-BPR

### Notice 1

This device complies with Part 15 of the FCC Rules and with RSS-210 of Industry Canada. Operation is subject to the following two conditions:

- 1) this device may not cause harmful interference, and
- 2) this device must accept any interference received, including interference that may cause undesirable operation.

### Notice 2

Changes or modifications made to this device not expressly approved by Sonova AG may void the FCC authorization to operate this device.

### Notice 3

This device has been tested and found to comply with the limits for a Class B digital device, pursuant to Part 15 of the FCC Rules and ICES-003 of Industry Canada. These limits are designed to provide reasonable protection against harmful interference in a residential installation. This device generates, uses and can radiate radio frequency energy and, if not installed and used in accordance with the instructions, may cause harmful interference to radio communications. However, there is no guarantee that interference will not occur in a particular installation. If this device does cause harmful interference to radio or television reception, which can be determined by turning the equipment off and on, the user is encouraged to try to correct the interference by one or more of the following measures:

- Reorient or relocate the receiving antenna
- Increase the separation between the equipment and receiver
- Connect the device into an outlet on a circuit different from that to which the receiver is connected
- Consult the dealer or an experienced radio/TV technician for help



### Radio information of your wireless hearing aid

Antenna type	Resonant loop antenna
Operation frequency	2.4 GHz – 2.48 GHz
Modulation	GFSK, Pi/4 DQPSK, GMSK
Radiated power	< 1 mW

### Bluetooth®

Range	~1 m
Bluetooth	4.2 Dual-Mode
Profiles supported	HFP (Hands-free profile), A2DP

### Compliance with emission and immunity standards

Emission standards	EN 60601-1-2
	IEC 60601-1-2
	EN 55011
	CISPR11/AMD1
	CISPR22
	CISPR32
	ISO 7637-2
	CISPR25
	EN 55025

### Immunity standards

	EN 60601-1-2
	IEC 60601-1-2
	EN 61000-4-2
	IEC 61000-4-2
	EN 61000-4-3
	IEC 61000-4-3
	EN 61000-4-4
	IEC 61000-4-4
	EN 61000-4-5
	IEC 61000-4-5
	EN 61000-4-6
	IEC 61000-4-6
	EN 61000-4-8
	IEC 61000-4-8
	EN 61000-4-11
	IEC 61000-4-11
	IEC 60601-1 (§ 4.10.2)
	ISO 7637-2

## Your feedback

Record your specific needs or concerns and bring to your first office visit after getting your hearing aids.

This will help your hearing care professional to address your needs.

\_\_\_\_\_  
\_\_\_\_\_

\_\_\_\_\_  
\_\_\_\_\_

\_\_\_\_\_  
\_\_\_\_\_

\_\_\_\_\_  
\_\_\_\_\_

\_\_\_\_\_  
\_\_\_\_\_

## Additional notes

\_\_\_\_\_

\_\_\_\_\_

\_\_\_\_\_

\_\_\_\_\_

\_\_\_\_\_

\_\_\_\_\_

\_\_\_\_\_

\_\_\_\_\_

\_\_\_\_\_

\_\_\_\_\_

\_\_\_\_\_

Australian Sponsor :  
Sonova Australia Pty Ltd.  
12 Inglewood Place,  
Norwest NSW 2153  
Australia



And importer for European Union :  
Sonova Deutschland GmbH  
Max-Eyth-Str. 20  
70736 Fellbach-Oeffingen, Germany  
Pat. [www.sonova.com/en/intellectualproperty](http://www.sonova.com/en/intellectualproperty)  
For a listing of Unitron group  
companies, please visit  
[www.unitron.com](http://www.unitron.com)

Distributor

029-6512-02/V1.08/2023-07/TM © 2022 Sonova AG. All rights reserved.



Manufacturer:

Sonova AG

Laubisrütistrasse 28

CH-8712 Stäfa

Switzerland

unitron.com



**sonova**

